

MAKING THE MOST OF YOUR SET

By Our Technical Expert

★Will readers requiring immediate postal replies to their technical queries please enclose a stamped, addressed envelope?

R. A. Brothers, Biggleswade

DIAL lights in the average wireless receiver are rather fragile, and I can well understand you having to replace this component fairly frequently. Despite the fact that they are so very cheap, this is rather annoying, and I suggest that you use instead a small 15-watt bulb connected directly across the mains but on the receiver side of the switch. A bulb of this kind will have a very long life, has the same fitting as your present dial light, and can be obtained from Messrs. A. F. Bulgin, Ltd.

This suggestion, of course, would not apply to readers who have either a D.C. or battery-operated receiver. With D.C. operated receivers the valve and the dial light are generally all wired in series, so that directly the dial light is removed, the set will not function.

J. Culley, Becontree

IT must be remembered that with a D.C. receiver, the polarity of the mains has always to be considered. You will find with your set that if the mains plug is in the power socket, the wrong way round the set will refuse to work, even though the dial lamp may light and the receiver has all the indications of operating satisfactorily, except, of course, of actually reproducing signals. This is not due as you thought to a faulty mains plug, and you should make a note just which way round it gives the correct polarity. Also, with your receiver you must take particular care not to earth it directly. If you think the hum level will be reduced by use of an earth, then make quite sure that the earth connection only reaches the receiver *via* a fixed condenser having a capacity of about 2-mfd. As regards the dial light which you

mention burns out very quickly, you cannot replace this bulb with one having a higher filament current for this will upset the working of the receiver. Make quite sure that you have the mains voltage adjustment correct. If possible with your 220-volt mains, use the 240-volt tapping as this will reduce the total current applied to the dial light.

W. Wilkinson, Aberdare

YOUR A.C./D.C. receiver is quite suitable for use on A.C. mains. The reason for the poor result since the change-over is due to the fact that you have unfortunately 200 volts A.C. supply.

On top of the chassis in your receiver you will find a small selector board. This is marked in voltages, and you merely have to screw the small terminal into the appropriate mains socket. You will find that at present this terminal is screwed into the 250 volt. Unscrew this, and screw it into the 200 volt socket. This will provide the correct voltages, and I think then your receiver will be satisfactory. If, however, the set has been in use for a considerable period, you probably now require at least one new valve.

G. Bird, Birmingham

WITH the older type of receiver, such as the one you are using, no provision is made for controlling the volume of the gramophone pick-up. The volume control in your particular set is in the high-frequency end and only operates on radio. There is, however, a very simple solution to your troubles, and that is to purchase a gramophone pick-up with a built-in volume control which is already connected for you. If you would like the names of the manufacturers making pick-ups of this kind, please drop me a card.

F. Stephens, Cardiff

WITH your particular receiver, although provision has been made for a separate extension loud-speaker, this speaker must have an impedance of 2 ohms in order that you obtain correct matching and satisfactory quality. Any type of permanent magnet loud-speaker will be suitable with this set providing it has a speech coil having the above impedance. If you wish to use two loud-speakers on one receiver then you must connect the speech coils either in parallel or in series and not to use two output transformers in the manner you suggest.

**THIS WEEK'S EXPERT TEST REPORT
THE PILOT B-43 SUPERHET**

A NUMBER of requests from readers have been received regarding the purchase of a highly selective receiver of the superhet type to be operated entirely from a battery and accumulator. A suitable instrument is the Pilot model B-43, which is a 4-valve superhet designed for three-waveband operation. In this receiver the latest type British Octal valves are employed which, to no small degree, account for the good quality and above-the-average performance, despite the low price of 9 guineas.

The three wavebands cover 16.5 to 52 metres, 180 to 565 metres, and 750 to 2,200 metres, so that readers will appreciate that there has been no reduction in waveband coverage in order to include a sensitive short wave channel.

A feature which is immediately outstanding is the high-quality reproduction. Despite the fact that only a simple 120-volt battery is recommended, the volume output is ample for the average room, while even at maximum volume there is no trace of distortion or overloading.

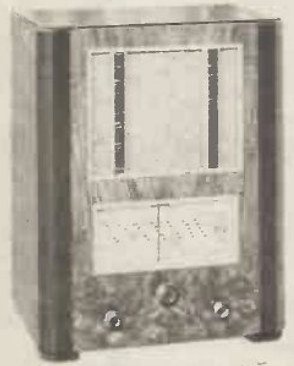
The loud-speaker is an 8 in. permanent magnet moving coil unit, while provision has been made for including an extension loud-speaker if required.

Generally speaking, with a normal external aerial, a wide selection of programmes on medium and long-wave European stations can always be relied upon, while on short waves, after the operator has got used to picking the right station at the correct time of the day, long-distance programmes can also be obtained on this channel.

Full information on this receiver can be obtained from Pilot Radio, Ltd., 87 Park Royal Road, London, N.W.10.



PRESS-BUTTON MODEL BT 530



BATTERY MODEL B 43

RADIO AT THE FINGER TIP !!!

The mere pressing of a "PILOTUNE" button immediately and accurately tunes in any one of your six favourite stations, and the name of the station and its wave-length is automatically shown on the special Eazlread dial. There is nothing to get out of order.

If you want to change a "press-button" station for another one, it is easily and simply done from the front of the cabinet. It only takes a moment.

Members of the family who want to tour the World can do so, because in addition to press buttons all Pilot receivers have a hand control Knob which allows one to tune-in the World's broadcasts.

Pilot Radio is All-World radio and suits every member of the family.

Fill in the Coupon for further details and arrange with your local dealer to demonstrate "Pilot" the World's leading radio receivers. The greatest radio Value ever offered.

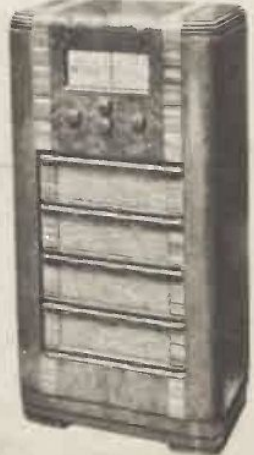
PILOT MODEL BT 530.
5-valve, 6 press-button All-wave Superhet. 3 wavebands. 8 in. m.c. speaker. **12 GNS.**
Table Model for A.C. mains.
Console Model BTC 530, for A.C. mains 15 gns.
AC/DC model of either, 1/2 guinea extra.

PILOT MODEL B 43.
A Battery operated 4-valve, All-wave Superhet. 3 wavebands, 8 in. m.c. speaker. **9 GNS.**
Table Model. Price without batteries.

PILOT MODEL C 53.
A Console 5-valve, All-wave Superhet for quality reception of the World's worth while stations on 3 wavebands. 10 in. moving coil speaker. A splendid, artistic addition to any room. Its appearance is equally as fine as its radio performance. **14 GNS.**
Console Model for A.C. mains GNS.
Table Model 53, for A.C. mains, 10 1/2 gns.
AC/DC model of either, 1/2 guinea extra.

**18 MODELS TO CHOOSE FROM
PRICES FROM**

9 to 35 Gns.



PILOT MODEL C 53

PILOT ALL-WAVE RADIO

Please send full details of all Pilot Superhet receivers, etc.; also **FREE, WORLD TIME CONVERSION CHART.**

NAME
ADDRESS
P.2

PILOT RADIO LTD., 87 Park Royal Rd., London, N.W.10

Fill in Coupon, place in unsealed envelope; only 1/4d. postage.